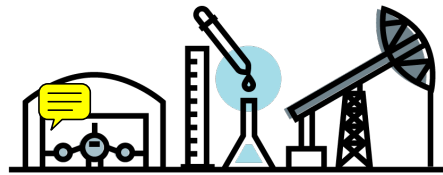


LIFE SCIENCE & DELIVERY



FORT WORTH HAS DEVELOPED NORTH TEXAS' LARGEST MEDICAL EMPLOYMENT CONCENTRATION

The life sciences industry is strong, healthy and active in Fort Worth thanks to smart collaborations and a near perfect mix of complementary businesses and strategically superior proximity. This climate of partnership and innovation has attracted leading and emerging players in the fields of biotechnology, pharmaceutical, healthcare and medical devices.

MARKET OPPORTUNITIES

- Fort Worth is home to over 100 health sector businesses and agencies, including global players in medical research and devices
- iter8 Health Innovation Community is a regional/national nexus of Med-Tech innovation in an inclusive and integrated community of talent, world-class scientists, entrepreneurs, companies, investors, and organizations advancing research, commercialization for companies and start-ups
- DFW International Airport has been awarded the International Air Transport Association's (IATA) Center of Excellence for Independent Validators (CEIV) Pharma certification for time and temperature-sensitive cargo

FORT WORTH ADVANTAGES

- Six Medical Headquarters: Texas Health Resources, Texas Health Harris Methodist Hospital, Baylor Scott & White All Saints, Cook Children's Medical Center, Medical City, UTSW Moncrief Cancer Institute
- 64 large firms, 38 large medical establishments
- Eight Fort Worth-area universities and life science colleges, plus 10 more colleges and universities within commuting distance
- Emerging Health & Life Sciences Cluster around unique preventative care
- 77 federal research awards in 2019

REPRESENTATIVE COMPANIES

Galderma

Alcon

ZS Pharma

DFB Pharmaceuticals

Smith & Nephew
Biotherapeutics

\$33M+

NIH-FUNDED PROJECTS

57 research projects in 2019

\$44.6M

IN 29 CPRIT AWARDS

Product development, prevention and academic research from 2010-2020

2,783

GRADUATES

In Biological and Biomedical Science from 490 programs at Fort Worth area colleges and universities in 2018